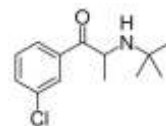


Rx BUPROPION

(Vial contains 8.8 mg somatropin, 60.2 mg sucrose and 2.05 mg O-phosphoric acid)



GENERIC NAME: bupropion

DRUG CLASS AND MECHANISM

Bupropion is an antidepressant medication that affects chemicals within the brain that nerves use to send messages to each other. These chemical messengers are called neurotransmitters. Many experts believe that depression is caused by an imbalance among the amounts of neurotransmitters that are released. Nerves, in a process referred to as reuptake, may recycle released neurotransmitters. Bupropion works by inhibiting the reuptake of dopamine, serotonin, and norepinephrine; an action that results in more dopamine, serotonin, and norepinephrine to transmit messages to other nerves. Bupropion is unique and unlike other antidepressants in that its major effect is on dopamine, an effect that is not shared by the selective serotonin reuptake inhibitors or SSRIs [for example, paroxetine (Paxil), fluoxetine (Prozac), sertraline (Zoloft)] or the tricyclic antidepressants or TCAs [for example, amitriptyline (Elavil), imipramine (Tofranil), desipramine (Norpramin)]. The FDA approved bupropion in December 1985.

PRESCRIPTION: Yes

GENERIC AVAILABLE: Yes

PREPARATIONS

Tablets: 75, 100, and 150 mg. Sustained Release tablets: 100, 150, and 200 mg. Extended Release tablets: 150 and 300 mg.

PRESCRIBED FOR

Bupropion is used for the management of major depression and seasonal affective disorder (depression that occurs primarily during the fall and winter). It is also prescribed for smoking cessation.

DRUG INTERACTIONS

This drug should not be used with the following medications because very serious interactions may occur: MAO inhibitors (e.g., isocarboxazid, phenelzine, tranylcypromine, pargyline, selegiline, linezolid, furazolidone). If you are currently using or have recently stopped taking an MAO inhibitor within the last 14 days, tell your doctor or pharmacist before starting bupropion. Before taking this medicine, tell your doctor of all nonprescription and prescription medications you may use especially: levodopa, warfarin, ritonavir, adrenaline-like stimulants (e.g., ephedrine), regular use of sedatives (e.g., diazepam), diabetes medications (e.g., hypoglycemic agents such as glyburide, glipizide, or insulin), amantadine, products containing nicotine (e.g., patches or gum). Also report the use of drugs which might increase seizure risk (decrease seizure threshold) when combined with bupropion such as phenothiazines (e.g., thioridazine), tricyclic antidepressants (e.g., amitriptyline), isoniazid (INH), or theophylline among others. Consult your doctor or pharmacist for details. Excess caffeine intake can increase the chance of seizures with this drug. Check all nonprescription/prescription drug labels for caffeine. Consult your doctor or pharmacist. Do not start or stop any medicine without doctor or pharmacist approval.

USES

This medication is used to treat depression.

OTHER USES

This medication may also be used for quitting smoking.

HOW TO USE

This medication may be taken with food if stomach upset occurs. Take doses at regularly scheduled times each day. Do not take more or less medication than prescribed. Taking more than the recommended dose of bupropion will increase your risk of having a seizure. The maximum dose of bupropion is 300 - 450 milligrams per day, depending on your medical condition (stop smoking therapy vs. psychiatric conditions). If you have very severe liver disease, the maximum dose is 150 milligrams every other day. Do not stop taking this medication without notifying your doctor. Since this drug may cause sleeplessness at first, it is best not to take this near bedtime. It may take 4 weeks or more before the full effects of this medication are noticed.

SIDE EFFECTS

This medication is generally well tolerated. Dry mouth, headache, increased sweating, nausea/vomiting, constipation, anxiety, fatigue and blurred vision

may occur. If these effects persist or worsen, notify your doctor. Report promptly: unusual weight loss or gain, palpitations, agitation, trouble sleeping. Unlikely but report promptly: tremor, dizziness, fainting, slowed movements, difficulty urinating, decreased sex drive, drowsiness. Very unlikely but report promptly: unusual or severe mental/mood changes, severe headache, fever, muscle aches, yellowing of the eyes or skin. Seek immediate medical attention if the following infrequent but serious side effect occurs: seizures. Bupropion should be stopped permanently if you have a seizure while taking the medication. In the unlikely event you have an allergic reaction to this drug, seek medical attention immediately. Symptoms may include trouble breathing, rash, itching, swelling, or severe dizziness. If you notice other effects not listed above, contact your doctor or pharmacist.

DOSING

Bupropion usually is given in one, two or three daily doses. For immediate-release tablets, no single dose should exceed 150 mg and each dose should be separated by 6 hours.

For depression the recommended dose of immediate-release tablets is 100 mg 3 times daily (300 mg/day); maximum dose is 450 mg daily. The initial dose is 100 mg twice daily. The dose may be increased to 100 mg 3 times daily after three days.

The initial dose of sustained-release tablets is 150 mg daily; target dose is 150 mg twice daily; maximum dose is 200 mg twice daily.

The initial dose of extended-release tablets is 150 mg daily; target dose is 300 mg daily; maximum dose is 450 mg daily. Extended release tablets are administered once daily.

When used for smoking cessation, bupropion usually is started as 150 mg once daily for three days, and then the dose is increased if the patient tolerates the starting dose. Smoking is discontinued two weeks after starting bupropion therapy.

Wellbutrin SR is given as two daily doses. Wellbutrin XL is given as one dose daily.

OVERDOSE

If overdose is suspected, contact your local poison control center or emergency room immediately. US residents can call the US national poison hotline at 1-800-222-1222. Canadian residents should call their local poison control center directly. Symptoms of overdose may include seizures, hallucinations, rapid heart rate, and loss of consciousness.

MISSED DOSE

Take any missed dose as soon as possible but not if it is within 4 hours of the next dose. If it is time for the next dose, skip the missed dose and resume your regular schedule. Do not "double-up" the dose.

STORAGE

Store at room temperature and keep away from moisture and sunlight. Do not store in the bathroom.

Note : This product information is intended only for residents of the India. Taj Pharmaceuticals Limited, medicines help to treat and prevent a range of conditions—from the most common to the most challenging—for people around the world.



Taj Group of Companies ^{INDIA}

Taj Pharmaceuticals Ltd.

Phone : General EPA BX : 91 - (0)22 - 26374592/92 91,
(0)22 - 26374592/93 91 - (0)22 - 30601000,
Fax : 91-(0)22-26341274

Revised November 2010