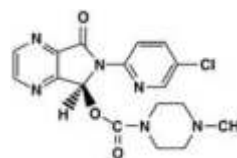


R^x ESZOPICLONE

(Eszopiclone is a non-benzodiazepine, oral, sedative drug)



GENERIC NAME: eszopiclone

DRUG CLASS AND MECHANISM

Eszopiclone is a non-benzodiazepine, oral, sedative drug ("sleeping pill") that is used for treating insomnia. According to the National Institutes of Health, more than 50 million Americans suffer from insomnia. Symptoms of insomnia include difficulty falling asleep, awakening frequently during the night, waking up too early, an inability to fall back to sleep, or awakening in the morning not feeling refreshed. Most drugs that have been used to treat insomnia are benzodiazepines, for example, flurazepam (Dalmene), lorazepam (Ativan), triazolam (Halcion), and temazepam (Restoril). Zolpidem (Ambien) was the first non-benzodiazepine approved for insomnia in over 20 years. Eszopiclone is unique in that it is the only drug used for insomnia that has been shown to be safe and effective for up to six months. Eszopiclone was approved by the FDA in December, 2004.

GENERIC: No

PRESCRIPTION: Yes

PREPARATIONS: Tablets of 1, 2, and 3 mg

STORAGE: Tablets should be stored at room temperature, 15-30 °C (59-86 °F).

PRESCRIBED FOR

Eszopiclone is used for the treatment of insomnia characterized by difficulty falling asleep and/or difficulty maintaining sleep during the night and early morning.

DOSING

The usual dose to improve or maintain sleep in most adults is 2 or 3 mg. Persons over the age of 65 years usually are treated with 1 or 2 mg. Eszopiclone should be taken immediately before going to bed since the onset of sedation may occur as rapidly as 10 minutes. It should be taken only by individuals who intend to sleep for at least 8 hours since its effects may last up to six hours.

DRUG INTERACTIONS

Alcohol (which causes sedation) and drugs that have sedating effects should not be used with eszopiclone since their sedating effects, when added to those of eszopiclone, may cause excessive sedation.

PREGNANCY

Eszopiclone should not be used during pregnancy.

NURSING MOTHERS

It is not known whether eszopiclone is excreted in human breast milk. Because many medicines are excreted in breast milk and because the effect of eszopiclone on infants has not been studied, women should not breast feed while taking eszopiclone.

SIDE EFFECTS

Patients taking eszopiclone or any other sedative drug may develop dependence on the drug for sleep and experience withdrawal symptoms when the drug is discontinued. The most common side effects of eszopiclone are dizziness and loss of coordination.

Note : This product information is intended only for residents of the India. Taj Pharmaceuticals Limited, medicines help to treat and prevent a range of conditions—from the most common to the most challenging—for people around the world.

TAJ DRUG WORLD

TAJ DRUG WORLD

Taj Group of Companies ^{INDIA}

Taj Pharmaceuticals Ltd.

Phone : General EPA BX : 91 - (0)22 - 26374592/92 91,
(0)22 - 26374592/93 91 - (0)22 - 30601000,
Fax : 91-(0)22-26341274

Revised November 2010