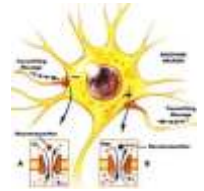
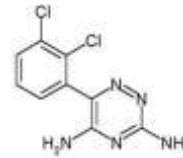


Rx LAMOTRIGINE

(LAMOTRIGINE - ORAL (lam-OH-try-jeen))



GENERIC NAME: LAMOTRIGINE - ORAL (lam-OH-try-jeen)

USES

This medication helps control seizure disorders. Use of lamotrigine in children 2 years of age and older is restricted to those having certain types of seizures (partial or Lennox-Gastaut type).

HOW TO USE

Take this medication by mouth exactly as prescribed. For best effects, take this medication at evenly spaced times throughout the day and night. This will ensure a constant level of drug in your body. Do not take this more often or increase your dose without consulting your doctor. Do not stop taking this drug suddenly without your doctor's approval since seizures may reoccur. Notify your doctor if seizure control worsens.

SIDE EFFECTS

Headache, fatigue, drowsiness, dizziness, blurred vision, weakness, clumsiness may occur the first several days as your body adjusts to the medication. If any of these effects continue or become bothersome, inform your doctor. If you develop a rash, stop using this drug and seek immediate medical attention. In the unlikely event you have an allergic reaction to this drug, seek immediate medical attention. Symptoms of an allergic reaction include: rash, itching, hives, fever, swollen glands, swelling of the lips or tongue, painful sores in the mouth or around the eyes, severe dizziness, trouble breathing. If you notice other effects not listed above, contact your doctor or pharmacist.

PRECAUTIONS

Tell your doctor if you have: other illnesses, heart problems, liver problems, kidney problems, allergies (especially drug allergies). Sunscreen and/or protective clothing is recommended to protect against possible severe rash triggered by sunlight. Use caution operating machinery or engaging in activities requiring alertness. Limit alcohol intake while taking this drug. This medication should be used only if clearly needed during pregnancy. Discuss the risks and benefits with your doctor. This drug is excreted into breast milk. Due to possible risks to nursing infants, breast-feeding while using this drug is not recommended. Consult your doctor.

DRUG INTERACTIONS

Tell your doctor of any over-the-counter or prescription medication you use, especially of: other medications for seizures (e.g., phenytoin, carbamazepine, valproic acid, phenobarbital, primidone). Do not start or stop any medicine without doctor or pharmacist approval.

OVERDOSE

If overdose is suspected, contact your local poison control center or emergency room immediately. US residents can call the US national poison hotline at 1-800-222-1222. Canadian residents should call their local poison control center directly. Symptoms of overdose may include unusual dizziness, severe headache, unusual sleepiness, and loss of consciousness.

MISSED DOSE

Try to take each dose at the scheduled time. If you miss a dose, take it as soon as remembered; do not take it if it is near the time for the next dose, instead, skip the missed dose and resume your usual dosing schedule. Do not "double-up" the dose to catch up.

STORAGE

Store this medication at room temperature at 77 degrees F (25 degrees C) away from heat, light and moisture. Brief storage between 59 and 86 degrees F (15 and 30 degrees C) is permitted. Do not store in the bathroom. Keep this and all medications out of the reach of children.

WARNING: Rarely, serious (sometimes fatal) skin rashes have occurred while using this medication. These rashes (e.g., Stevens-Johnson

syndrome) are more common in children (less than 16 years old) than in adults. Therefore, lamotrigine should only be used in children who have partial seizures or seizures associated with Lennox-Gastaut syndrome. Immediately notify your doctor if you develop any type of rash. If this medication is the cause of the rash, the drug must be stopped. Even after stopping this medication, it is still possible for the rash to cause permanent or life-threatening scarring along with other problems. The possibility of a rash may be increased by using too much of this medication when treatment begins, increasing the dose beyond what your doctor prescribes during treatment, or taking valproic acid with lamotrigine. Most life-threatening rashes have occurred within 2 to 8 weeks of starting this medication. However, such serious rashes have also occurred after 6 months of use.

Taj DRUG WORLD

Taj Group of Companies ^{INDIA}

Taj Pharmaceuticals Ltd.

Phone : General EPA BX : 91 - (0)22 - 26374592/92 91,
(0)22 - 26374592/93 91 - (0)22 - 30601000,
Fax : 91-(0)22-26341274

Revised November 2010