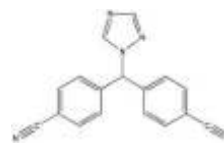


R_x LETROZOLE

(Letrozole is an oral, anti-estrogen drug)



100 % EXPORT QUALITY MEDICINE



GENERIC NAME: letrozole

DRUG CLASS AND MECHANISM

Letrozole is an oral, anti-estrogen drug that is used for treating postmenopausal women with breast cancer. The growth of some breast cancers in postmenopausal women is promoted by estrogens that circulate in the blood, and the adrenal glands are the main source of these circulating estrogens. Letrozole inhibits the enzyme in the adrenal glands (aromatase) that produces the estrogens, estradiol and estrone. Letrozole was approved by the FDA in 1997.

GENERIC AVAILABLE: no

PRESCRIPTION: yes

PREPARATIONS: Tablets: 2.5mg.

PRESCRIBED FOR

Letrozole is used to treat postmenopausal women with breast cancer that is resistant to the more commonly-used anti-estrogen medications such as tamoxifen (Nolvadex). It also is approved for treating postmenopausal women after surgery who have hormone-sensitive early breast cancer.

DOSING

Letrozole generally is taken once daily, with or without food.

DRUG INTERACTIONS

Tell your doctor of all nonprescription and prescription medication you may use, especially of drugs that cause drowsiness such as: sedatives, tranquilizers, psychiatric medications, certain cough-and-cold products containing antihistamines (e.g., diphenhydramine), anti-seizure drugs, muscle relaxants, narcotic pain relievers (e.g., codeine). Do not start or stop any medicine without doctor or pharmacist approval.

USES

This medication is used to treat advanced breast cancer in women after menopause (change of life).

HOW TO USE

Take by mouth once daily with or without food or as directed. Do not stop taking this medication unless instructed to do so by your doctor or pharmacist. Continue to take your other medications unless instructed otherwise.

SIDE EFFECTS

This drug is generally well tolerated. Fatigue, nausea, constipation, diarrhea, headache, drowsiness or dizziness may occur. If these persist or worsen, notify your doctor promptly. Unlikely but report promptly: chest pain, stomach pain, trouble breathing, hot flushes, rash, itching. Very unlikely but report promptly: swelling/redness/weakness/ pain in legs or arms, vision problems, unusual vaginal bleeding. If you notice other effects not listed above, contact your doctor or pharmacist.

PRECAUTIONS

Tell your doctor your medical history, especially of: liver problems, allergies (especially drug allergies). Limit alcohol intake as it may increase the side effects of this drug. Caution performing tasks requiring mental alertness (e.g., driving), since it is possible this drug may cause drowsiness. This drug is not recommended for use during pregnancy. Consult your doctor for details. It is not known if this drug is excreted into breast milk. Consult your doctor before breast-feeding.

OVERDOSE

If overdose is suspected, contact your local poison control center or emergency room immediately. US residents can call the US national poison hotline at 1-800-222-1222. Canadian residents should call their local poison control center directly.

MISSED DOSE

If you miss a dose, use it as soon as you remember. If it is near the time of the next dose, skip the missed dose and resume your usual dosing schedule. Do not "double-up" the dose to catch up.

STORAGE

Store at room temperature between 59 and 86 degrees F (15-30 degrees C) away from light and moisture.

Note : This product information is intended only for residents of the India. Taj Pharmaceuticals Limited, medicines help to treat and prevent a range of conditions—from the most common to the most challenging—for people around the world.

Taj DRUG WORLD

Taj Group of Companies INDIA

Taj Pharmaceuticals Ltd.

Phone : General EPA BX : 91 - (0)22 - 26374592/92 91,
(0)22 - 26374592/93 91 - (0)22 - 30601000,
Fax : 91-(0)22-26341274

Revised November 2010