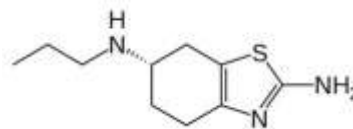


R_x PRAMIPEXOLE

(This medication is used to treat Parkinson's disease)



USES

This medication is used to treat Parkinson's disease. It helps replace the brain chemical called dopamine, which is low in persons with Parkinson's disease.

HOW TO USE

Take this medication as prescribed. Do not increase your dose or take it more often than directed. Do not stop taking this medication without your doctor's approval. Stopping this drug suddenly may cause you to experience unwanted side effects. Dose is adjusted based on your condition and any side effects. It may take a few weeks for full effects of this medication to be noticed.

SIDE EFFECTS

Nausea, dizziness, drowsiness, trouble sleeping, constipation, unusual weakness, stomach upset and pain, headache or dry mouth may occur. If these effects persist or worsen, notify your doctor promptly. To relieve dry mouth, suck on (sugarless) hard candy or ice chips, chew (sugarless) gum, drink water or use saliva substitute. Report promptly any of these serious side effects: hallucinations, difficulty moving or walking, trouble breathing. Unlikely but report promptly any of these effects: twitching, confusion, fainting, leg/foot swelling, restlessness, chest pain, unusually fast/slow heartbeat, sudden irresistible urge to sleep. Very unlikely but report promptly any: muscle pain, vision problems, fever, severe muscle stiffness. If you notice other effects not listed above, contact your doctor or pharmacist.

PRECAUTIONS

Tell your doctor your medical history, especially of: heart disease, heart arrhythmias (abnormal rhythms), mental confusion, hallucinations, difficulty walking, low blood pressure, kidney or liver disease, any allergies. To avoid dizziness and lightheadedness when rising from a seated or lying position, get up slowly. Use caution when performing tasks requiring mental alertness such as driving or using machinery. Limit alcohol use because it may intensify the drowsiness and dizziness effects of this drug. This drug should be used only when clearly needed during pregnancy. Discuss the risks and benefits with your doctor. It is not known if this medication is excreted into breast milk. Consult your doctor before breast-feeding.

DRUG INTERACTIONS

Tell your doctor of any over-the-counter or prescription medication you may take including: metoclopramide, psychiatric medicine, drugs for anxiety or depression, medicine for Parkinson's disease, cimetidine, sleep medication, muscle relaxants, tranquilizers, narcotic pain relievers, anti-seizure drugs, certain antihistamines (e.g., diphenhydramine). Do not start or stop any medicine without doctor or pharmacist approval.

OVERDOSE

If overdose is suspected, contact your local poison control center or emergency room immediately. US residents can call the US national poison hotline at 1-800-222-1222. Canadian residents should call their local poison control center directly.

MISSED DOSE

If you miss a dose, take it as soon as remembered; do not take if it is almost time for the next dose. Instead, skip the missed dose and resume your usual dosing schedule. Do not "double-up" the doses.

STORAGE

Store at controlled room temperature away from moisture and sunlight. Do not store in the bathroom.

Note : This product information is intended only for residents of the India. Taj Pharmaceuticals Limited, medicines help to treat and prevent a range of conditions—from the most common to the most challenging—for people around the world.



Taj Group of Companies^{INDIA}

Taj Pharmaceuticals Ltd.

Phone : General EPA BX : 91 - (0)22 - 26374592/92 91,
(0)22 - 26374592/93 91 - (0)22 - 30601000,
Fax : 91-(0)22-26341274

Revised November 2010