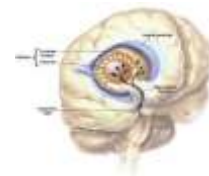
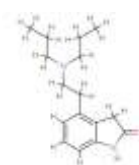


Rx **ROPINIROLE**  
(This medication is used to treat Parkinson's disease)



### USES

This medication is used to treat Parkinson's disease. It helps replace the brain chemical called dopamine, which is low in Parkinson's disease. It is also used to treat RLS (Restless Legs Syndrome).

### HOW TO USE

Take this medication as prescribed. Do not increase your dose or take it more often than directed. Do not stop taking this medication without your doctor's approval. Stopping this drug suddenly may cause you to experience unwanted side effects. Dosing is based on your condition and this drug's side effects. It may take a few weeks for this medication to take effect.

### SIDE EFFECTS

Nausea, dizziness, drowsiness, trouble sleeping, constipation, unusual weakness, stomach upset and pain, headache or dry mouth may occur. If these effects persist or worsen, notify your doctor promptly. To relieve dry mouth, suck on (sugarless) hard candy or ice chips, chew (sugarless) gum, drink water or use saliva substitute. Report promptly: hallucinations, difficulty moving or walking, difficulty breathing. Unlikely but report promptly: confusion, restlessness, leg or foot swelling, fainting, twitching, chest pain, unusually fast or slow heartbeat. Very unlikely but report promptly: muscle pain, vision problems, fever, severe muscle stiffness, sudden irresistible urge to sleep. If you notice other effects not listed above, contact your doctor or pharmacist.

### PRECAUTIONS

Tell your doctor if you have a history of: heart disease or heart arrhythmias (abnormal rhythms), hallucinations, mental confusion, difficulty walking, any allergies, kidney problems, liver disease, low blood pressure. To avoid dizziness and lightheadedness when rising from a seated or lying position, get up slowly. Use caution when performing tasks requiring mental alertness such as driving or using machinery. Limit alcohol use because it may intensify the drowsiness and dizziness effects of this drug. This drug should be used only when clearly needed during pregnancy. Discuss the risks and benefits with your doctor. It is not known if this medication is excreted into breast milk. Consult your doctor before breast-feeding.

### DRUG INTERACTIONS

Tell your doctor of any over-the-counter or prescription medication you may take, including: metoclopramide, medication for psychosis/anxiety/depression, other drugs used for Parkinson's, cimetidine, sleep medication, certain muscle relaxants, tranquilizers, narcotic pain relievers, anti-seizure drugs, certain antihistamines (e.g., diphenhydramine), ciprofloxacin. Do not start or stop any medicine without doctor or pharmacist approval.

### OVERDOSE

If overdose is suspected, contact your local poison control center or emergency room immediately. US residents can call the US national poison hotline at 1-800-222-1222. Canadian residents should call their local poison control center directly. Symptoms of overdose may include nausea, vomiting, drowsiness, confusion, and facial muscle spasms.

### MISSED DOSE

If you miss a dose, take it as soon as remembered; do not take if it is almost time for the next dose. Instead, skip the missed dose and resume your usual dosing schedule. Do not "double-up" the doses.

### STORAGE

Store at controlled room temperature away from moisture and sunlight. Do not store in the bathroom.

**Note :** This product information is intended only for residents of the India. Taj Pharmaceuticals Limited, medicines help to treat and prevent a range of conditions—from the most common to the most challenging—for people around the world.



Taj Group of Companies <sup>INDIA</sup>

Taj Pharmaceuticals Ltd.

Phone : General EPA BX : 91 - (0)22 - 26374592/92 91,  
(0)22 - 26374592/93 91 - (0)22 - 30601000,  
Fax : 91-(0)22-26341274

Revised November 2010