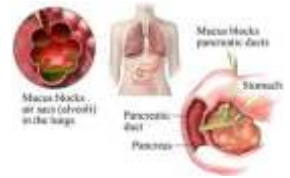


# Rx SOMATROPIN

(This medication are used for the treatment of growth failure, growth hormone deficiency, intestinal disorder)



## USES

Various brands of this medication are used for the treatment of one of the following medical conditions: growth failure, growth hormone deficiency, intestinal disorder (short bowel syndrome) or HIV-related weight loss or wasting.

## HOW TO USE

This medication is given by injection into a muscle or under the skin. The way you inject this medicine will depend on the brand that you are using. Check with your pharmacist to ensure that the way you are injecting your medicine is correct. It is important to change the location of the injection site to avoid problem areas under the skin. For best results, this medication must be used exactly as prescribed by your doctor. It is important to understand your therapy and to follow your doctor's instructions closely. If this medicine is used for short bowel syndrome, consult your doctor if a special diet (high carbohydrate/lowfat) or the use of nutritional supplements may be helpful. If this medicine is used for weight loss/muscle wasting, it may take up to 2 weeks to notice the effects of the drug. Do not use more of this medication than prescribed or use it more often since the risk of side effects will be increased. Learn how to prepare, mix, and inject your medicine correctly. Be sure to ask your doctor or pharmacist any questions you may have and follow the instructions for mixing provided with the medication. Do not shake while mixing the solution. Shaking makes the medication not work properly. Before using, check this product visually for particles or discoloration. If either is present, do not use the liquid. Needles and syringes are for one-time use only. Do not reuse. Throw away used needles, syringes, and medical supplies properly. Consult your pharmacist.

## SIDE EFFECTS

Headache, nausea, vomiting, fatigue, muscle pain, or weakness may occur. If these symptoms continue or become bothersome, inform your doctor or pharmacist promptly. Tell your doctor immediately if any of these unlikely but serious side effects occur: development of a limp, joint/hip/knee pain, unusual increase in thirst or urination, swelling of hands, ankles or legs, rapid heartbeat. Tell your doctor immediately if any of these highly unlikely but very serious side effects occur: change in the appearance or size of any mole, severe stomach pain, vision problems or changes, seizure. Rare (possibly fatal) lung/breathing problems may be caused by this medication in children with Prader-Willi syndrome. Those at higher risk include males, severely overweight children, or those with serious lung/breathing problems ( e.g., sleep apnea, lung infections, lung disease). Children should be checked for certain breathing problems (upper airway obstruction) before and during treatment. Heavy snoring or irregular breathing during sleep (sleep apnea) are signs of airway obstruction. Tell the doctor immediately if these signs occur. Also report any signs of lung infection, such as fever, persistent cough, or trouble breathing. A serious allergic reaction to this drug is unlikely, but seek immediate medical attention if it occurs. Symptoms of a serious allergic reaction include: rash, itching, severe swelling, dizziness, trouble breathing. If you notice other effects not listed above, contact your doctor or pharmacist.

## PRECAUTIONS

Before taking somatropin, tell your doctor or pharmacist if you are allergic to it; or if you have any other allergies. This medication should not be used if you have certain medical conditions. Before using this medicine, consult your doctor or pharmacist if you have: major surgery or trauma, severe breathing problems (acute respiratory failure), undergoing therapy for tumors (cancer), Prader-Willi syndrome (see Side Effects section above), normal growth has stopped (closed epiphyses). Before using this medication, tell your doctor or pharmacist your medical history, especially of: diabetes, thyroid problems, back problems (scoliosis). When this medication is given to newborns, mix with sterile water for injection that does not contain a preservative. A preservative (benzyl alcohol) which may be found in the liquid used to mix this product can infrequently cause serious problems (sometimes death), if given by injection to an infant during the first months of life. The risk is greater with lower birth weight infants and is greater with increased amounts of benzyl alcohol. Symptoms include sudden gasping, low blood pressure, or a very slow heartbeat. Report these symptoms to the doctor immediately should they occur. Caution is advised when using in the elderly because

elderly patients may be more sensitive to its effects. This medication should be used only when clearly needed during pregnancy. Discuss the risks and benefits with your doctor. It is not known if this drug passes into breast milk. Consult your doctor before breast-feeding.

## DRUG INTERACTIONS

Tell your doctor of any over-the-counter or prescription medication you use, especially of: glucocorticoids (e.g., prednisone, hydrocortisone). Do not start or stop any medicine without doctor or pharmacist approval.

## OVERDOSE

If overdose is suspected, contact your local poison control center or emergency room immediately. US residents can call the US national poison hotline at 1-800-222-1222. Canadian residents should call their local poison control center directly. Symptoms of overdose may include severe headache, nausea, or vomiting; sudden onset of sweating, fatigue, shakiness, confusion (hypoglycemia); or persistent swelling of hands and feet.

## MISSED DOSE

It is important to use each dose at the scheduled time. If you miss a dose, contact your doctor who will help establish a new dosing schedule. Do not double the dose to catch up.

## STORAGE

Consult your pharmacist and/or written manufacturer information for specific storage requirements. It is important to follow those instructions closely. Discard properly any unused medication after the expiration date marked on the product label. Do not freeze. Keep all medicines away from children and pets.

**Note :** This product information is intended only for residents of the India. Taj Pharmaceuticals Limited, medicines help to treat and prevent a range of conditions—from the most common to the most challenging—for people around the world.

**Taj DRUG** WORLD

Taj Group of Companies <sup>INDIA</sup>

Taj Pharmaceuticals Ltd.

Phone : General EPA BX : 91 - (0)22 - 26374592/92 91,  
(0)22 - 26374592/93 91 - (0)22 - 30601000,  
Fax : 91-(0)22-26341274

Revised November 2010