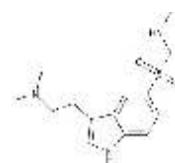


R^x SUMATRIPTAN

(Sumatriptan is a drug that is used for treating migraine headaches)



GENERIC NAME: sumatriptan

DRUG CLASS AND MECHANISM

Sumatriptan is a drug that is used for treating migraine headaches. It belongs to a class of drugs called selective serotonin receptor agonists. Other members of this class include naratriptan (Amerge), zolmitriptan (Zomig), rizatriptan (Maxalt), frovatriptan (Frova), eletriptan (Relpax), and almotriptan (Axert). Migraine headaches are believed to result from dilatation of blood vessels in the brain. Sumatriptan relieves migraines by stimulating serotonin receptors in the brain which cause the muscles surrounding the blood vessels in the brain to contract and narrow the blood vessels. At the same time, it also reduces transmission of pain signals by nerves to the brain. While it is very effective in relieving migraine headaches, it does not prevent or reduce the number of headaches. The FDA approved sumatriptan in December 1992.

PRESCRIPTION: Yes

GENERIC AVAILABLE: Yes

PREPARATIONS: Tablets: 25, 50, 100 mg. Intranasal Solution: 5, 20 mg. Injection Solution: 4 and 6 mg/0.5 ml

PRESCRIBED FOR

All formulations of sumatriptan are used for acute treatment of migraine headaches with or without an aura in adults. The injectable formulation also is used for treating cluster headaches.

DOSING

The recommended oral dose is 25-100 mg and the maximum dose is 200 mg daily. The recommended intranasal dose is 5-20 mg and the maximum dose is 40 mg daily. The recommended injection dose is 4 or 6 mg injected under the skin. The maximum dose is two 6 mg injections separated by 1 hour.

DRUG INTERACTIONS

Monoamine oxidase inhibitors, for example, isocarboxazid (Marplan), phenelzine (Nardil), tranylcypromine (Parnate), and procabazine (Matulane), may reduce the breakdown of sumatriptan in the liver, leading to increased blood levels and side effects of sumatriptan.

Combining sumatriptan with sibutramine (Meridia), selective serotonin reuptake inhibitors or SSRIs, including fluoxetine (Prozac), citalopram (Celexa), paroxetine (Paxil), and sertraline (Zoloft) or serotonin and norepinephrine reuptake inhibitors, including venlafaxine (Effexor), duloxetine (Cymbalta), and desvenlafaxine (Pristiq) may increase the concentration of serotonin in the brain, causing increased serotonin-related side effects.

Administering sumatriptan within 24 hours of treatment with an ergot-containing medication [dihydroergotamine (Migranal), ergotamine, Methergine) is contraindicated because such combinations increase the likelihood of vasospasms.

USES

This medication is used to treat migraine headache attacks once they occur. It is not effective in preventing migraines. This medication is not to be used for other types of headaches.

HOW TO USE

One dose is taken by mouth at the first signs of a migraine attack. If you must take a second dose, do so exactly as instructed by your doctor. Do not take more than 200mg in a 24 hour period. Tablets are to be swallowed whole with a glass of water. Do not crush or chew them. If you have never taken this medication before and you have risk factors for heart disease (see Precautions), you may be advised to take the very first dose in your doctor's office in order to monitor for rare but serious heart problems (e.g., heart attack).

SIDE EFFECTS

This medication may initially cause flushing, dizziness, weakness, nausea, drowsiness, stiffness, or feelings of tingling, heat, fatigue. If any of these

effects continue or become bothersome, inform your doctor. Tell your doctor immediately if any of these unlikely but serious side effects occur: seizures. In the unlikely event you have an allergic reaction to this drug, seek immediate medical attention. Symptoms of an allergic reaction include: rash, itching, swelling, dizziness, trouble breathing. If you notice other effects not listed above, contact your doctor or pharmacist.

PRECAUTIONS

Before taking sumatriptan, tell your doctor or pharmacist if you are allergic to it; or to other "triptan" migraine drugs; or if you have any other allergies. Before using this medication, tell your doctor or pharmacist if you have risk factors for heart disease including: high cholesterol level, high blood pressure, diabetes, smoking history, family history of heart disease or stroke, obesity. Caution is also recommended in women after menopause or after removal of the ovaries, and men over 40 years old because of an increased risk for undiagnosed heart disease. Before using this medication, tell your doctor or pharmacist your medical history, especially of: certain blood circulation disorders (e.g., Raynaud's syndrome), heart disease, coronary artery disease, stroke, kidney disease, liver disease, seizures. There have been rare reports of those with sulfa drug allergies having allergic reactions to sumatriptan. Consult your doctor or pharmacist. Since this medication may cause drowsiness, use caution operating machinery or engaging in activities requiring alertness and avoid alcohol because it may increase drowsiness/dizziness effects. The manufacturer does not recommend use of sumatriptan in the elderly, because they may be more sensitive to its side effects. Sumatriptan should be used during pregnancy only when clearly needed. Discuss the risks and benefits with your doctor. This medication is excreted into breast milk. The effects on nursing infants are unknown at this time. Consult your doctor before breast-feeding.

OVERDOSE

If overdose is suspected, contact your local poison control center or emergency room immediately. US residents can call the US national poison hotline at 1-800-222-1222. Canadian residents should call their local poison control center directly. Symptoms of overdose may include tremor, chest pain, slowed breathing, and seizures.

MISSED DOSE

Take this medication only when a migraine attack occurs as directed. This is not taken routinely. Never "double-up" the dose.

STORAGE

Store this medication at 15 to 30 degrees C (59 to 86 degrees F) away from heat and light. Do not store in the bathroom. Keep this and all medications out of the reach of children.

Note : This product information is intended only for residents of the India. Taj Pharmaceuticals Limited, medicines help to treat and prevent a range of conditions—from the most common to the most challenging—for people around the world.

Taj DRUG WORLD

Taj Group of Companies^{INDIA}

Taj Pharmaceuticals Ltd.

Phone : General EPA BX : 91 - (0)22 - 26374592/92 91,
(0)22 - 26374592/93 91 - (0)22 - 30601000,
Fax : 91-(0)22-26341274

Revised November 2010