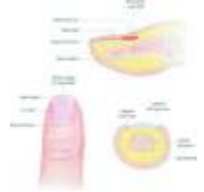
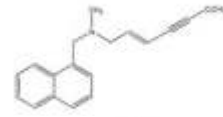


Rx TERBINAFINE

(Terbinafine is used to treat certain types of fungal infections)



USES

Terbinafine is used to treat certain types of fungal infections (e.g., fingernail or toenail). It works by stopping the growth of fungus. This medication belongs to a class of drugs known as antifungals.

HOW TO USE

Take this medication by mouth, usually once a day, or as directed by your doctor. It may be taken with or without food. Dosage and duration of therapy is based on your medical condition and response to therapy. It may take several months after completion of treatment to see the full benefit of this drug. It takes time for your new healthy nails to grow out and replace the infected nails. Continue to take this medication until the full prescribed amount is finished. Stopping the medication too early may allow the fungus to continue to grow, which may result in a relapse of the infection. Inform your doctor if your condition persists or worsens.

SIDE EFFECTS

Diarrhea, stomach upset, temporary change or loss of taste, or tiredness may occur. If any of these effects persist or worsen, notify your doctor or pharmacist promptly. Remember that your doctor has prescribed this medication because the benefit to you is greater than the risk of side effects. Many people using this medication do not have serious side effects. Tell your doctor immediately if any of these rare but very serious side effects occur: new signs of infection (e.g., fever, chills, persistent sore throat), easy bruising/bleeding, vision changes. This drug rarely has caused very serious (possibly fatal) liver disease. Tell your doctor immediately if you develop symptoms of liver disease, including: persistent nausea, loss of appetite, severe stomach/abdominal pain, dark urine, vomiting, yellowing of eyes or skin. A very serious allergic reaction to this drug is unlikely, but seek immediate medical attention if it occurs. Symptoms of a serious allergic reaction may include: rash, itching, swelling, severe dizziness, trouble breathing. If you notice other effects not listed above, contact your doctor or pharmacist.

PRECAUTIONS

Before taking terbinafine, tell your doctor or pharmacist if you are allergic to it; or if you have any other allergies. Before using this medication, tell your doctor or pharmacist your medical history, especially of: immune system problems, kidney disease, liver disease, lupus erythematosus. Limit alcoholic beverages. Daily use of alcohol may increase your chance for serious side effects. This medication should be used only when clearly needed during pregnancy. Fungal nail infection treatment usually may be postponed until after delivery. Discuss the risks and benefits with your doctor. This medication passes into breast milk and may have undesirable effects on a nursing infant. Therefore, breast-feeding is not recommended while using this drug. Consult your doctor before breast-feeding.

DRUG INTERACTIONS

Your healthcare professionals (e.g., doctor or pharmacist) may already be aware of any possible drug interactions and may be monitoring you for it. Do not start, stop or change the dosage of any medicine before checking with them first. Before using this medication, tell your doctor or pharmacist of all prescription and nonprescription/herbal products you may use, especially of: cimetidine, cyclosporine, rifampin, warfarin, drugs removed from your system by certain liver enzymes (e.g., dextromethorphan, tricyclic antidepressants such as desipramine, certain SSRI antidepressants such as fluoxetine, certain heart medications such as carvedilol, metoprolol, propafenone, mexiletine, certain pain medications such as tramadol, certain psychiatric medications such as thioridazine).

OVERDOSE

If overdose is suspected, contact your local poison control center or emergency room immediately. US residents can call the US national poison hotline at 1-800-222-1222. Canadian residents should call their local poison control center directly.

MISSED DOSE

If you miss a dose, take it as soon as you remember. If it is near the time of the next dose, skip the missed dose and resume your usual dosing schedule. Do not double the dose to catch up.

STORAGE

Store at room temperature 77 degrees F (25 degrees C) away from light and moisture. Do not store in the bathroom. Keep all medicines away from children and pets.

Note : This product information is intended only for residents of the India. Taj Pharmaceuticals Limited, medicines help to treat and prevent a range of conditions—from the most common to the most challenging—for people around the world.



Taj Group of Companies ^{INDIA}

Taj Pharmaceuticals Ltd.

Phone : General EPA BX : 91 - (0)22 - 26374592/92 91,
(0)22 - 26374592/93 91 - (0)22 - 30601000,
Fax : 91-(0)22-26341274

Revised November 2010