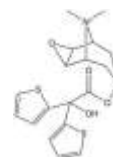
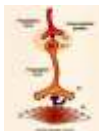


# Rx TIOTROPIUM

(This medication is an anticholinergic agent inhaled into the lungs)



**GENERIC NAME:** TIOTROPIUM - INHALATION CAPSULES (tee-oh-TROW-pee-um)

## USES

This medication is an anticholinergic agent inhaled into the lungs where it opens up breathing passages. It is used to treat breathing difficulties caused by chronic obstructive pulmonary disease (COPD). This medication does not work immediately and should not be used for asthma attacks. Use quick-relief medicines/inhalers for sudden shortness of breath or asthma attacks.

## HOW TO USE

Do not swallow these capsules by mouth. The contents of the capsule are inhaled using a special inhaler, usually once daily as directed. Do not breathe into the mouthpiece at any time. Do not use this more often than prescribed. Carefully read the patient instruction sheet in the product package, and learn how to properly use the special inhaler device. Consult your doctor or pharmacist if you are unclear about any of the information. It may take several days before full benefits occur. For best results, this medication must be taken regularly, as directed by your doctor. Rinse your mouth after using the inhaler to help prevent dryness and relieve throat irritation. Follow the directions on the instruction sheet provided with this medication to clean the inhaler at least once a month. This medication works best when the level in your body is kept at a constant level. Do this by inhaling your daily dose at the same time each day. Do not suddenly stop taking this medication without consulting your doctor. If your condition persists or worsens, contact your doctor or pharmacist.

## SIDE EFFECTS

This medication may cause dry mouth, blurred vision, constipation, runny nose or irritated throat. If they persist or worsen, notify your doctor promptly. Tell your doctor immediately if any of these unlikely but serious side effects occur: fast heartbeat, difficulty urinating, white patches in your mouth, change in vaginal discharge. If the drug is accidentally sprayed in the eye, temporary blurring of vision or visual halos may occur. Contact your doctor immediately if these symptoms occur. In the unlikely event eye pain occurs, it may be a symptom of narrow-angle glaucoma. This is a very serious condition which may be induced by this drug, and which requires emergency medical attention. Rarely, inhaled medications may cause a worsening of breathing problems immediately after use. If this occurs, contact your doctor immediately. An allergic reaction to this drug is unlikely, but seek immediate medical attention if it occurs. Symptoms of an allergic reaction include: rash, itching, swelling, dizziness, trouble breathing. If you notice other effects not listed above, contact your doctor or pharmacist.

## PRECAUTIONS

Before using this medication, tell your doctor your medical history, especially of: glaucoma (narrow-angle), prostate enlargement (BPH or cancer), difficulty urinating, severe kidney disease, any allergies (especially to atropine or its derivatives such as ipratropium or oxitropium). This drug may cause blurred vision; use caution engaging in activities requiring clear vision such as driving or using machinery. This medication should be used only when clearly needed during pregnancy. Discuss the risks and benefits with your doctor. It is not known if this medication passes into breast milk. Consult your doctor before breast-feeding.

## DRUG INTERACTIONS

Before using this medication, tell your doctor of all nonprescription or prescription products you may use, especially of: bowel or bladder antispasmodics/anticholinergics (e.g., atropine, clidinium, propantheline), antihistamines/anticholinergics (often found in cough/cold preparations), medication for Parkinson's disease (anticholinergics such as benzotropine). Do not start or stop any medicine without doctor or pharmacist approval.

## OVERDOSE

If overdose is suspected, contact your local poison control center or emergency room immediately. US residents can call the US national poison hotline at 1-800-222-1222. Canadian residents should call their local poison control center directly. Symptoms may include confusion, unusually fast/irregular heartbeat, hot/dry skin.

## MISSED DOSE

If you miss a dose, use it as soon as you remember. If it is near the time of the next dose, skip the missed dose and resume your usual dosing schedule. Do not double the dose to catch up.

## STORAGE

US product: This medication should be stored at room temperature below 77 degrees F (25 degrees C). Avoid freezing. Once the blister is opened, the capsule should be used immediately. Pull back the foil to expose one capsule at a time. Do not expose more than one capsule. If more than one capsule is exposed, you should discard the unused exposed capsule. Do not store in the bathroom. Canadian product: Store this medication at 77 degrees F (25 degrees C). Brief storage between 59 and 86 degrees F (15 and 30 degrees C) is permitted. Do not expose the capsules to extreme temperatures. Do not store capsules in the inhaler device. Keep all medicines away from children and pets.

**Note :** This product information is intended only for residents of the India. Taj Pharmaceuticals Limited, medicines help to treat and prevent a range of conditions—from the most common to the most challenging—for people around the world.

\*\*\*  
**Taj DRUG**  
WORLD



Taj Group of Companies <sup>INDIA</sup>

Taj Pharmaceuticals Ltd.

Phone : General EPA BX : 91 - (0)22 - 26374592/92 91,  
(0)22 - 26374592/93 91 - (0)22 - 30601000,  
Fax : 91-(0)22-26341274

Revised November 2010