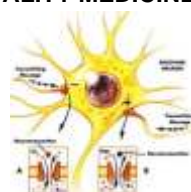
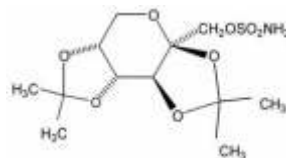


Rx TOPIRAMATE

(This medicine is used to treat a seizure disorder)



GENERIC NAME: TOPIRAMATE - ORAL (toe-PEER-uh-mate)

USES

Topiramate is used to treat a seizure disorder (epilepsy). This medication is also used to prevent migraine headaches.

HOW TO USE

This drug is taken by mouth, generally twice daily. Dosage is slowly increased over several weeks and adjusted to improve seizure control. Because of the bitter taste, do not chew or crush tablets. Doses above 400 mg daily generally are not more effective than lower doses. If it is necessary to discontinue this drug, generally the dosage should be decreased slowly, not stopped suddenly. Use exactly as directed. Do not stop using your other seizure medications unless directed to do so.

SIDE EFFECTS

Weakness, tiredness, drowsiness, dizziness, tingling sensations, loss of appetite and weight loss may occur. If these persist or worsen, notify your doctor promptly. Report promptly: unsteadiness, slowing or shakiness, speech problems, mental/mood changes, stomach/abdominal pain. Unlikely but report promptly: itching, trouble or rapid breathing, fast/slow/irregular heartbeat, loss of consciousness, fever, persistent sore throat. Seek immediate medical attention if any of these rare but very serious eye problems occur: sudden vision change/blurred vision, eye pain or redness. Topiramate infrequently can cause decreased sweating, which could raise your body temperature (hyperthermia). The risk of this serious side effect is greater in hot weather and/or during vigorous exercise, especially in children. Drink plenty of fluids and dress lightly while in hot climates, or when exercising. Check carefully for signs of decreased sweating. If this occurs, promptly seek cooler or air-conditioned shelter and/or stop exercising. Seek immediate medical attention if your body temperature is above normal, or if you have mental/mood changes, headache or dizziness. Consult your doctor for more details. If you notice other effects not listed above, contact your doctor or pharmacist.

PRECAUTIONS

Before using this drug, tell your doctor your medical history, including: allergies (especially drug allergies), kidney disease, liver disease, severe lung/breathing problems, chronic diarrhea, surgery, special diets. Drink plenty of fluids to decrease the chance of kidney stones. Limit alcohol intake as it may aggravate side effects. Caution performing tasks that require mental alertness (e.g., driving). Caution is advised when using this drug in children because it may affect bone health, growth rate, and final height. Consult your doctor or pharmacist for more details. This medication should be used only when clearly needed during pregnancy. Discuss the risks and benefits with your doctor. It is not known if this drug is excreted into breast milk. Consult your doctor before breast-feeding.

DRUG INTERACTIONS

Tell your doctor of all prescription and nonprescription medication you may use, especially of: phenytoin, carbamazepine, other drugs which cause decreased sweating (e.g., acetazolamide, anticholinergics such as amitriptyline or haloperidol). Also report drugs that can make you drowsy such as: sedatives, sleep medicines, psychiatric medications, narcotic pain relievers (e.g., codeine), certain antihistamines (e.g., diphenhydramine), anti-anxiety drugs, other anti-seizure drugs. This drug may interfere with the effectiveness of birth control pills. Discuss using other methods of birth control with your doctor. Do not start or stop any medicine without doctor or pharmacist approval.

OVERDOSE

If overdose is suspected, contact your local poison control center or emergency room immediately. US residents can call the US national poison hotline at 1-800-222-1222. Canadian residents should call their local poison control center directly.

MISSED DOSE

If you miss a dose, use it as soon as you remember. If it is near the time of the next dose, skip the missed dose and resume your usual dosing schedule. Do not "double-up" the dose to catch up.

STORAGE

Store at room temperature away from light and moisture.



Taj Group of Companies ^{INDIA}

Taj Pharmaceuticals Ltd.

Phone : General EPA BX : 91 - (0)22 - 26374592/92 91,
(0)22 - 26374592/93 91 - (0)22 - 30601000,
Fax : 91-(0)22-26341274

Revised November 2010